

COVID-19

SAFETY PRECAUTIONS

In compliance to COVID-19 Level 1 regulations and directions



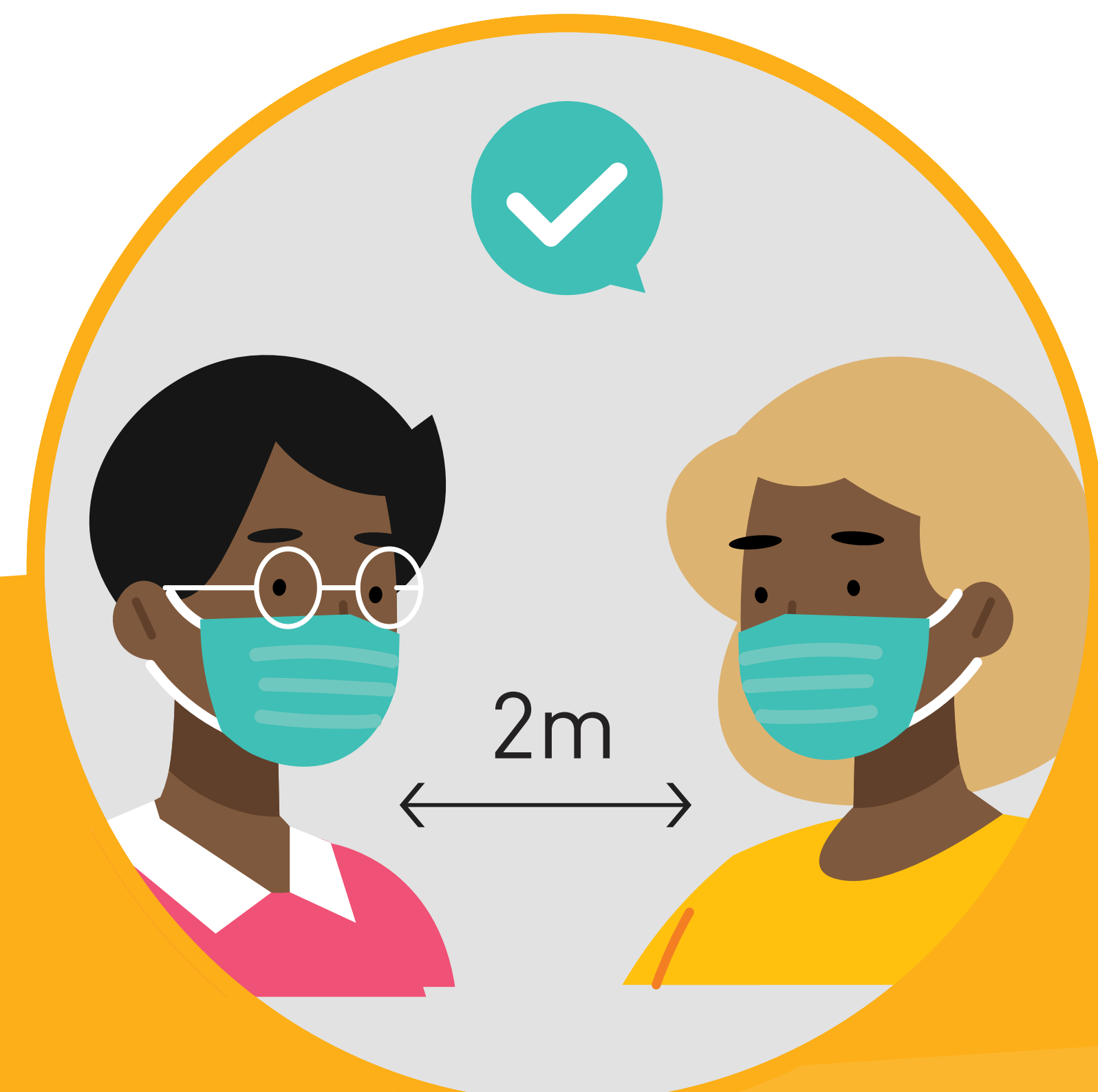
All City of Johannesburg Sport and Recreation facilities are limited to 50 percent entry.



All people entering the facility must sign the attendance register, be sanitized and screened.



No mask no entry.



Observe social distance of one and a half metres from each other.